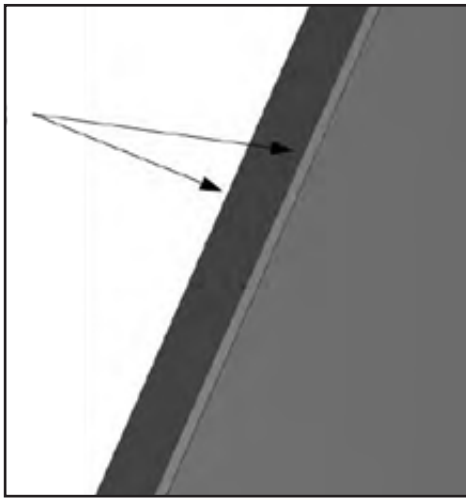
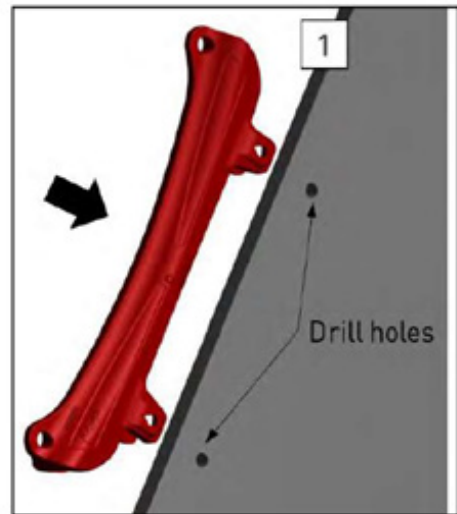


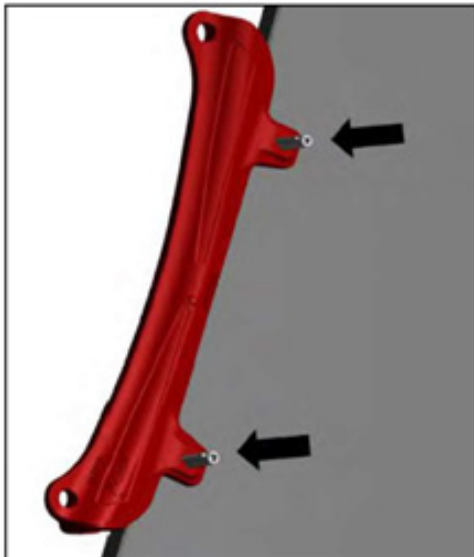
## FITTING INSTRUCTIONS FOR CONSTRUCTION SIZE MTG PROMET PROTECTORS



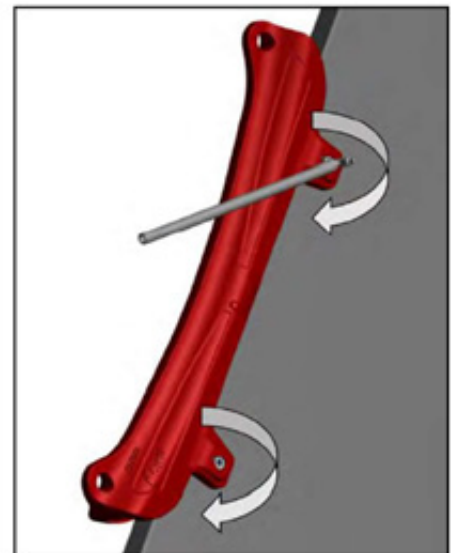
1.) Grind a 3mm x 3mm chamfer on both corners of the Bucket side, along the whole length of Protector



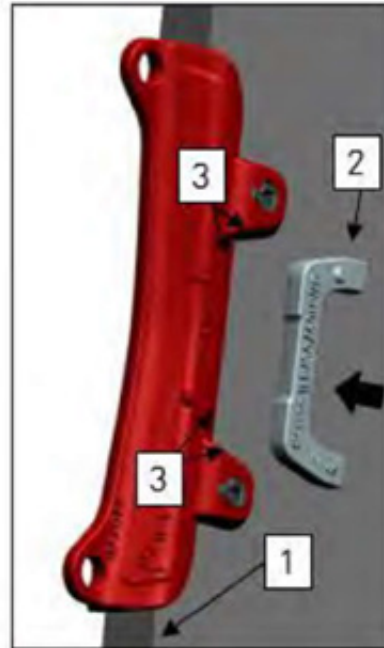
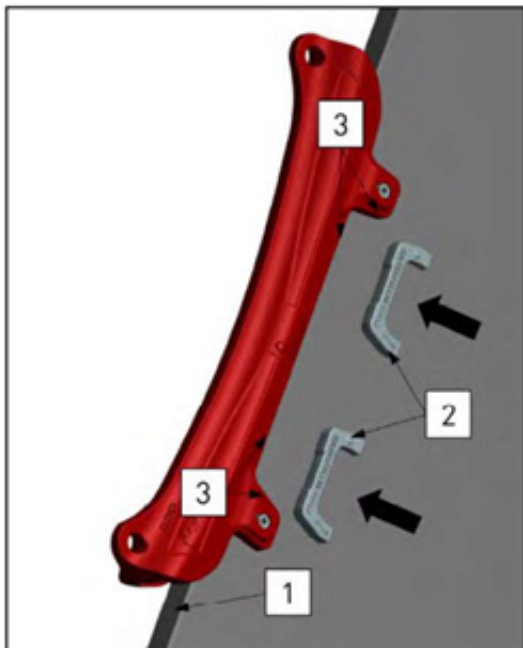
2.) Place Protector on the Bucket side wall, 5-10mm above the adapter wear cap. Ensure Protector is hard against the front of Bucket side (1) and mark the hole centres. Drill holes at 28mm diameter +/- 1mm



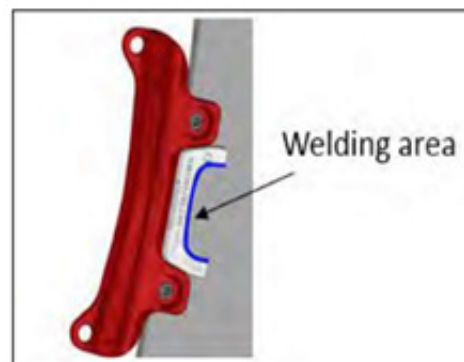
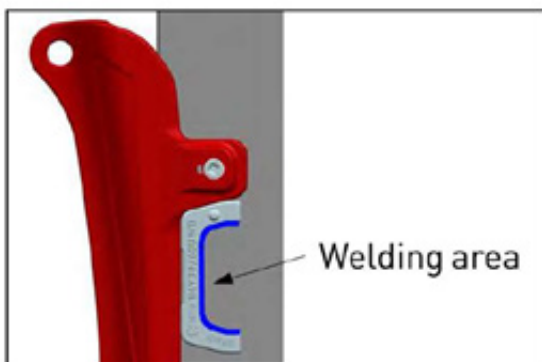
3.) After drilling the holes, insert both pins and turn clockwise until they stop



### FITTING INSTRUCTIONS FOR CONSTRUCTION SIZE MTG PROMET PROTECTORS CONT...



- 4.) Pre-heat the Bucket side to the recommended temperatures and position the weld-on bases (2), until they come into contact with the legs of the Protector (3). Make several tack welds on the back of each base



- 5.) Proceed with the welding of each weld-on base at the designated welding area
- 6.) After completing the welding process, remove the Protector and place the sponge retainers into the internal recess. The hard side of the retainer must be facing the outside edge of Protector
- 7.) Fit Protector onto the Bucket side, insert both pins and turn clockwise until they stop

Ready to go!

